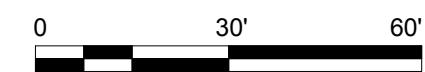
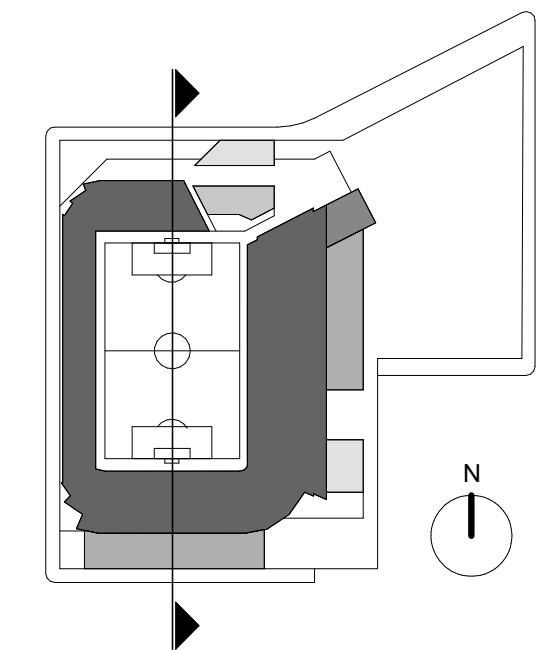
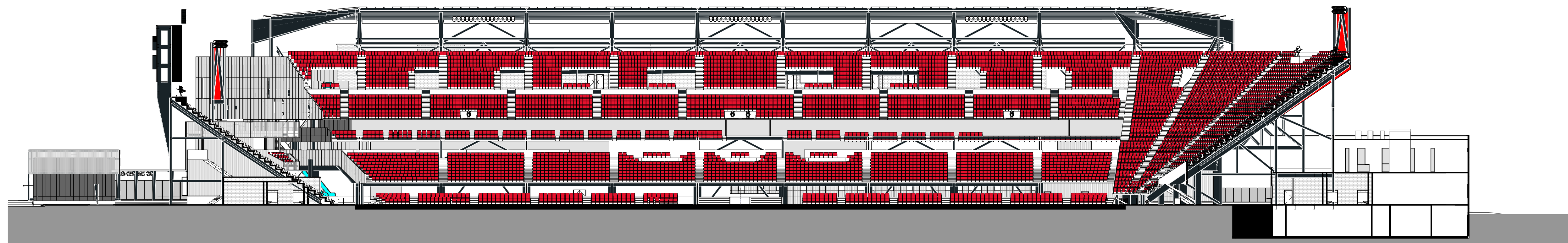


① E - W SECTION LOOKING NORTH
1" = 30'-0"



② N - S SECTION LOOKING EAST
1" = 30'-0"

POPULOUS

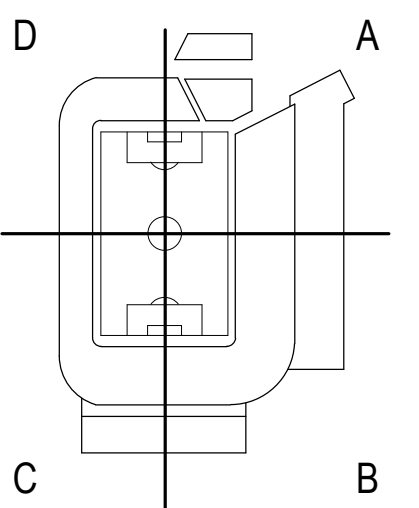
Marshall | Moya Design



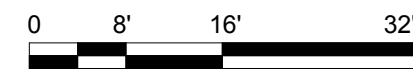
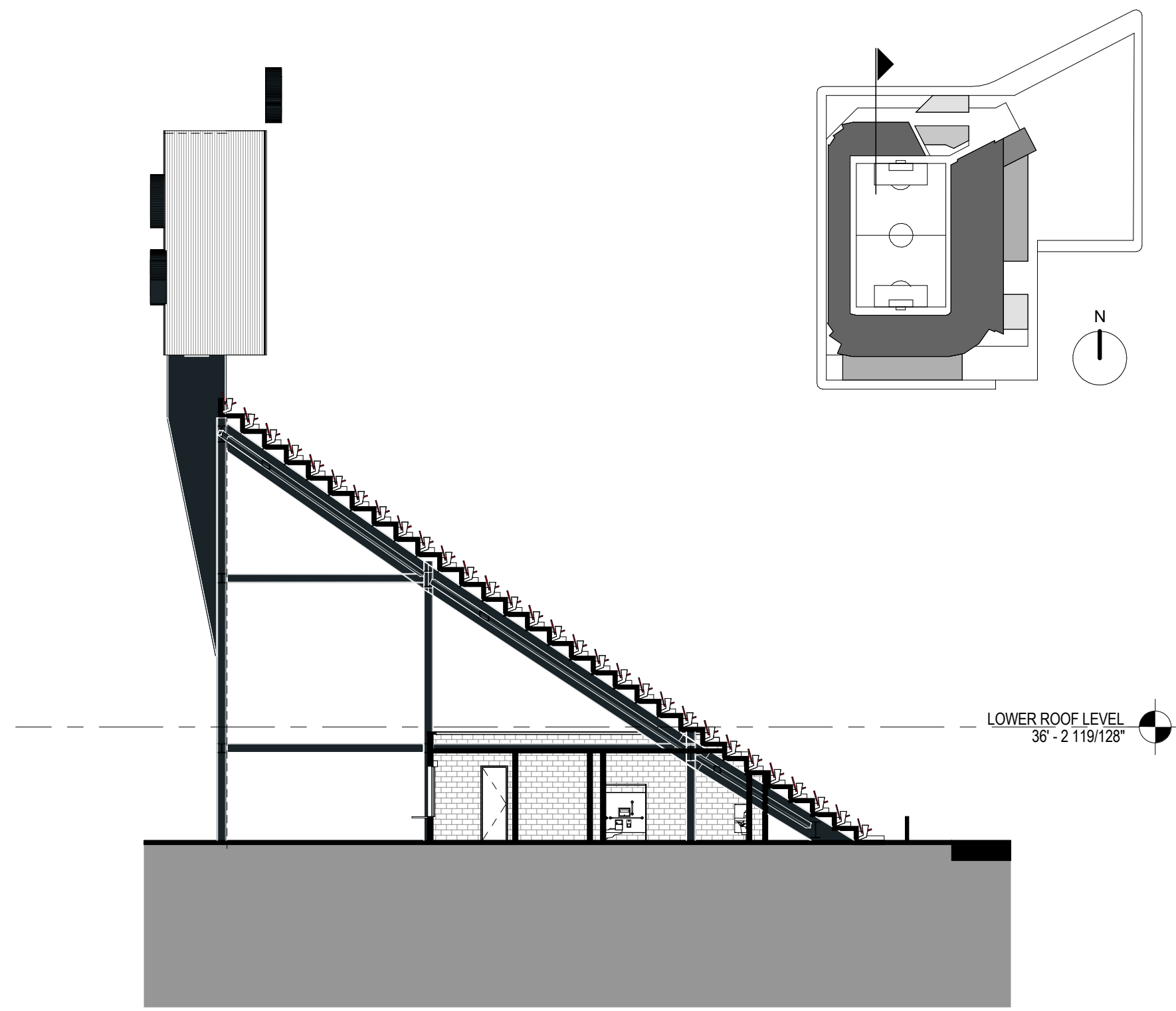
DC UNITED SOCCER STADIUM

100 Potomac Avenue, SW
Washington, DC 20024

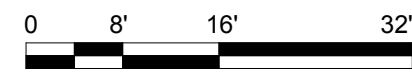
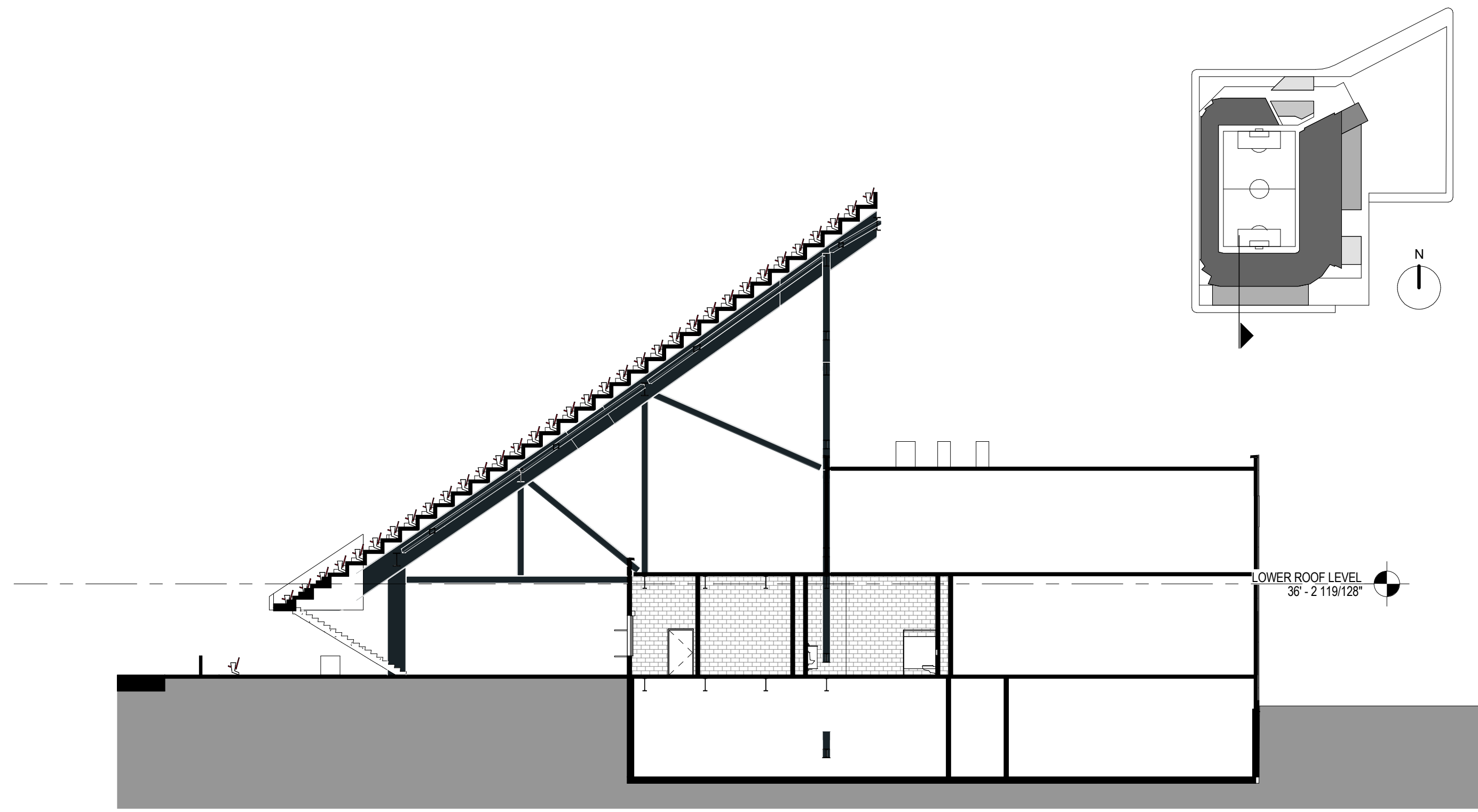
100% PUD SUBMISSION



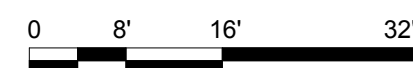
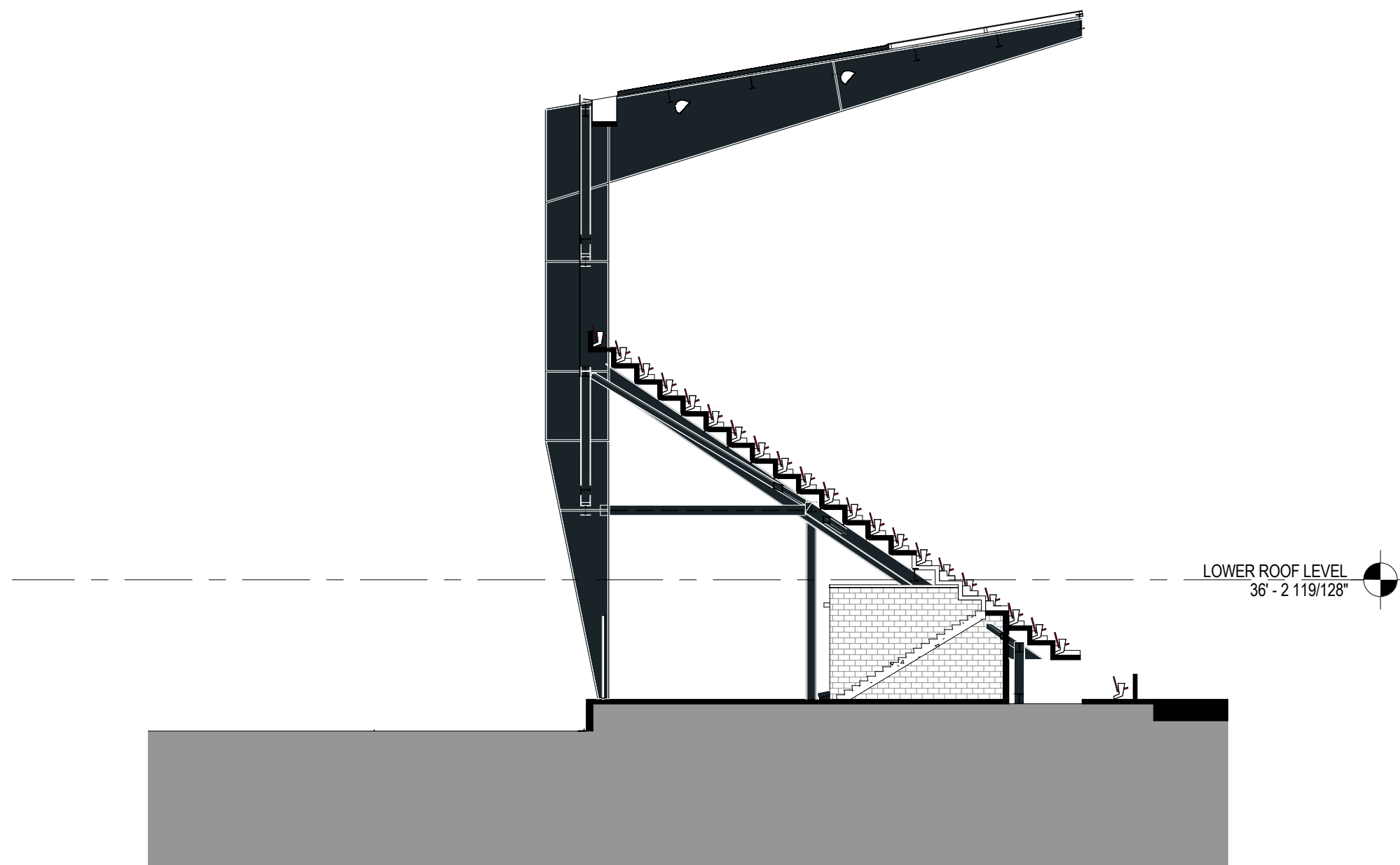
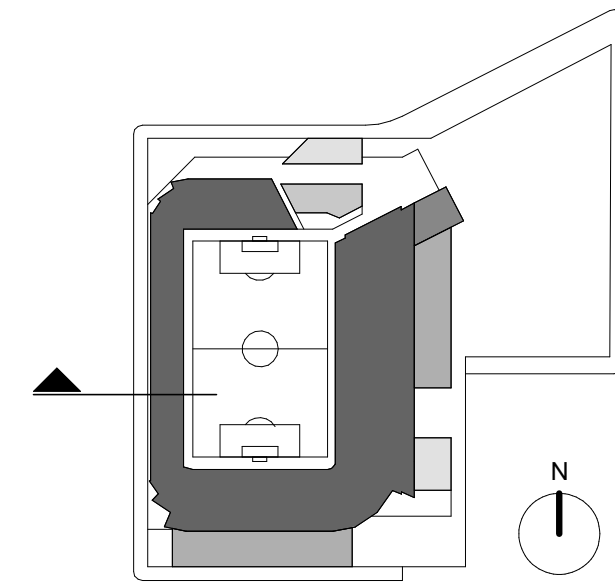
OVERALL BUILDING SECTIONS



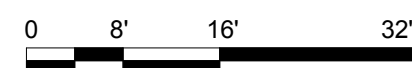
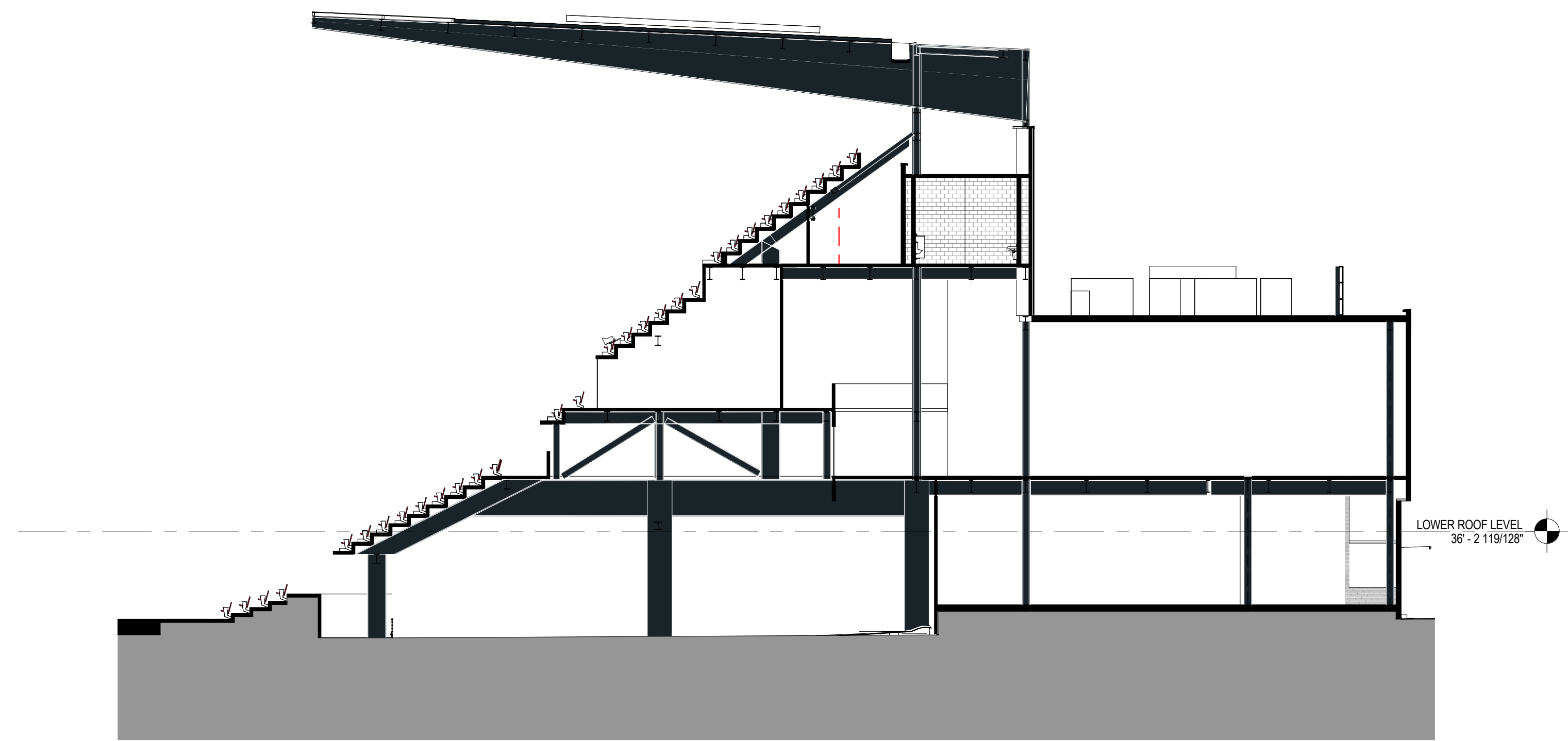
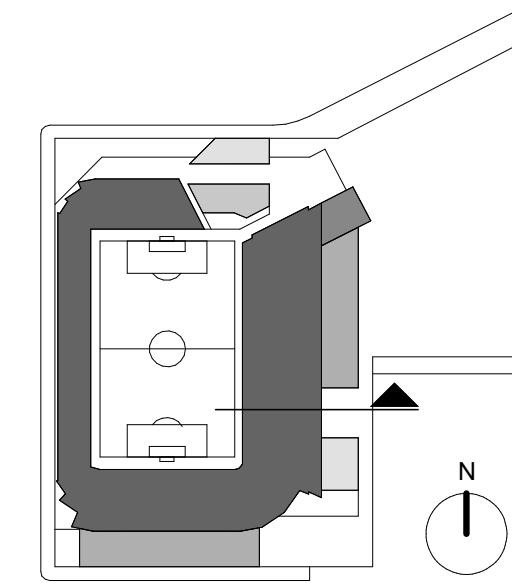
④ NORTH ENLARGED SECTION
1/16" = 1'-0"



③ SOUTH ENLARGED SECTION
1/16" = 1'-0"



② WEST ENLARGED SECTION
1/16" = 1'-0"



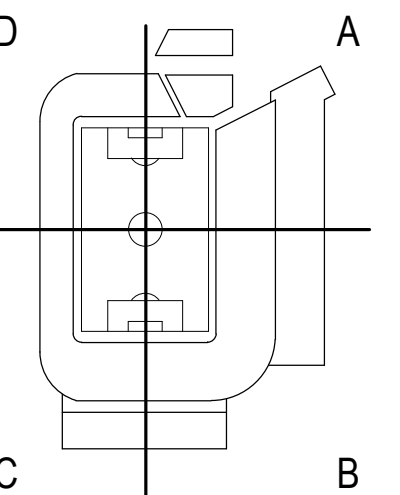
① EAST ENLARGED SECTION
1/16" = 1'-0"

POPULOUS
Marshall | Moya Design



DC UNITED SOCCER STADIUM
100 Potomac Avenue, SW
Washington, DC 20024

100% PUD SUBMISSION



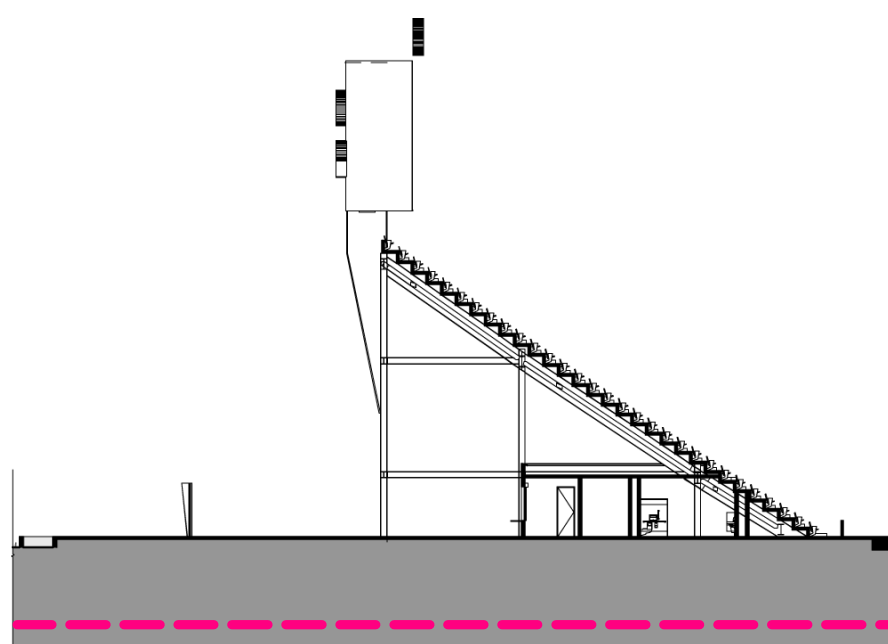
ENLARGED BUILDING SECTIONS

SPACE LEGEND

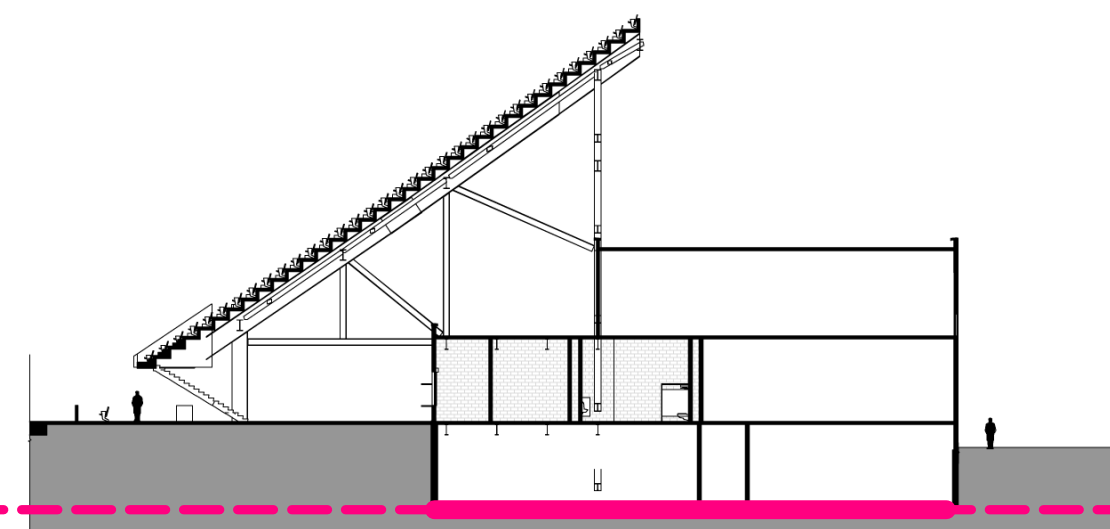
- 1 Player Field Tunnel
- 2 Stadium MEP Space
- 3 Team Sport Facilities / Officials / Talent
- 4 Press / Media Facilities
- 5 Stadium Operations and Support
- 6 Fan Amenities - Restrooms
- 7 Fan Amenities - Concessions
- 8 Food Service and Food Service Support
- 9 Premium Space - Suites
- 10 Premium Space - Clubs
- 11 Retail - DC United Team Store
- 12 Retail - Leaseable Open Retail Space
- 13 Office Space - DC United
- 14 Office Space - Leaseable Open Office Space
- 15 Ticketing + Will Call
- 16 Circulation - Concourse
- 17 Circulation - Vertical
- 18 Circulation - Loading Dock + Truck Yard

ENTRY LEGEND

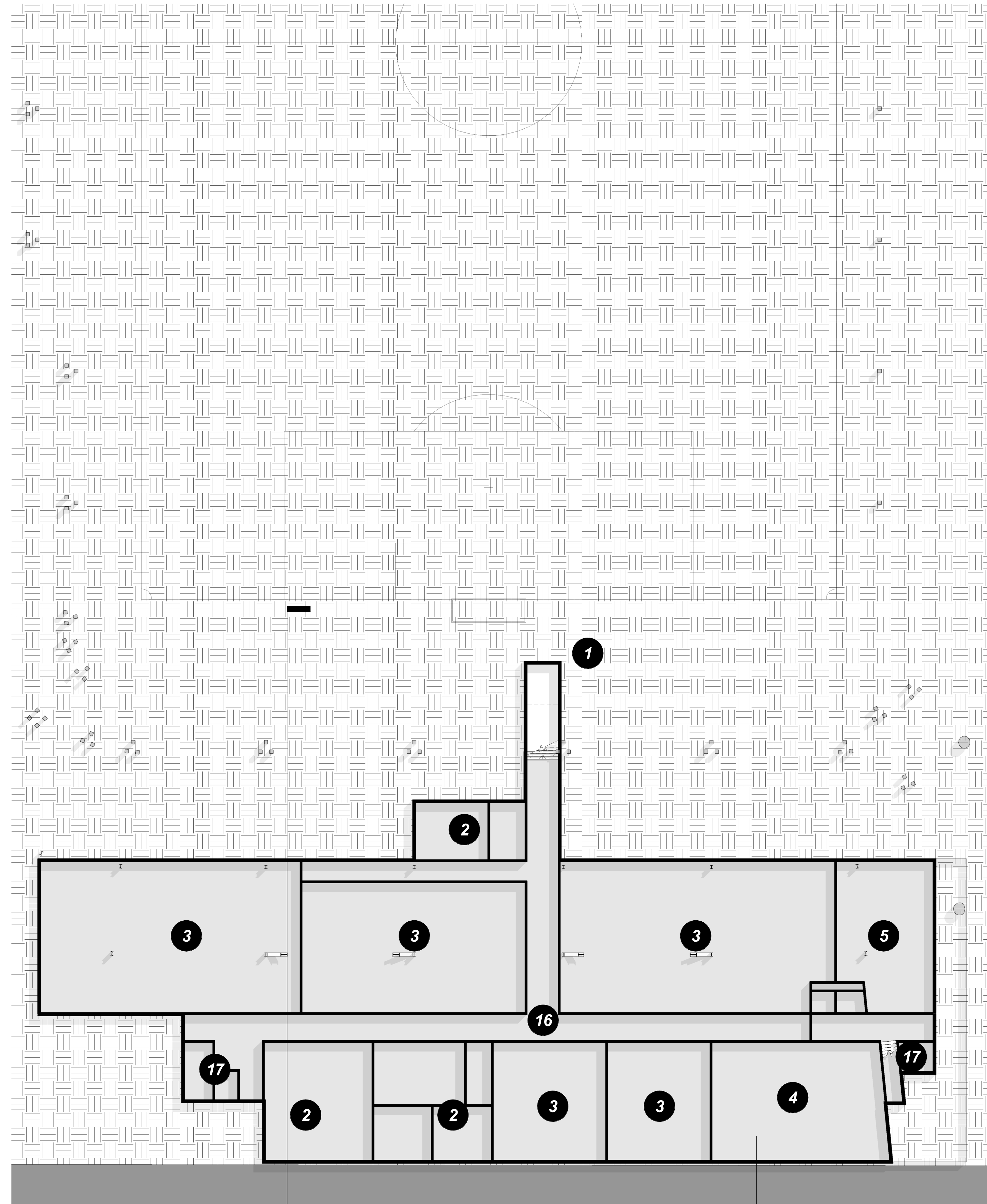
- 1 Northeast Main Fan Entry Gate
- 2 Northeast Premium Entry
- 3 Ticketing + Food Service Staff Entry
- 4 Loading Dock Pedestrian Gate
- 5 Loading Dock Vehicular Gate
- 6 Stadium Operations Staff Entry
- 7 Utility Entry Gate
- 8 PEPCO 2 _ 24' Easement Entry Gates
- 9 Event Staff + Press + Officials Entry
- 10 DC United Staff + Player + Office Space Entry
- 11 Southwest Corner Retail Entry
- 12 Southwest Corner Fan Entry Gate
- 13 Northwest Corner Fan Entry Gate
- 14 Team Store Entry



NORTH SECTION



SOUTH SECTION



1 BASEMENT LEVEL AREA PLAN - AREA B+C
1" = 20'-0"

INTERIOR LAYOUTS ARE ILLUSTRATIVE ONLY AND SUBJECT TO CHANGE ON FINAL PLAN

POPULOUS

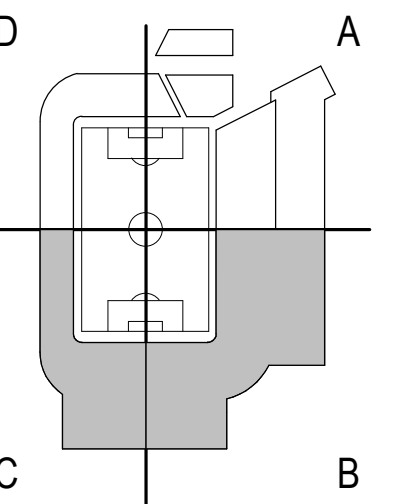
Marshall | Moya Design



DC UNITED SOCCER STADIUM

100 Potomac Avenue, SW
Washington, DC 20024

100% PUD SUBMISSION



BASEMENT LEVEL AREA
PLAN - AREA B+C

PART B - NOT PART OF STADIUM PUD SUBMISSION, DESIGN INTENT SHOWN FOR REFERENCE ONLY

PUBLIC REALM - NOT PART OF PUD SUBMISSION, DESIGN INTENT SHOWN FOR REFERENCE ONLY

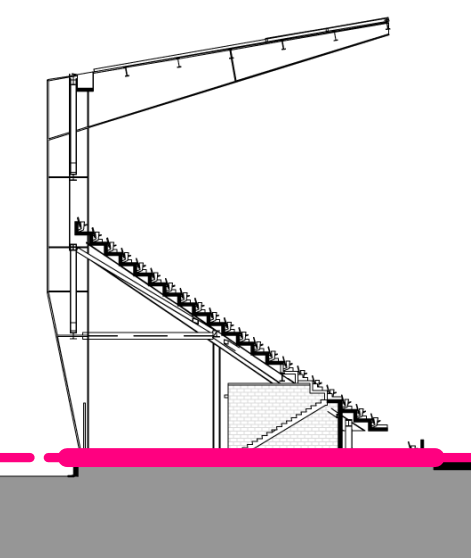
DISTRICT OF COLUMBIA RESPONSIBLE FOR DESIGN OF PUBLIC REALM

SPACE LEGEND

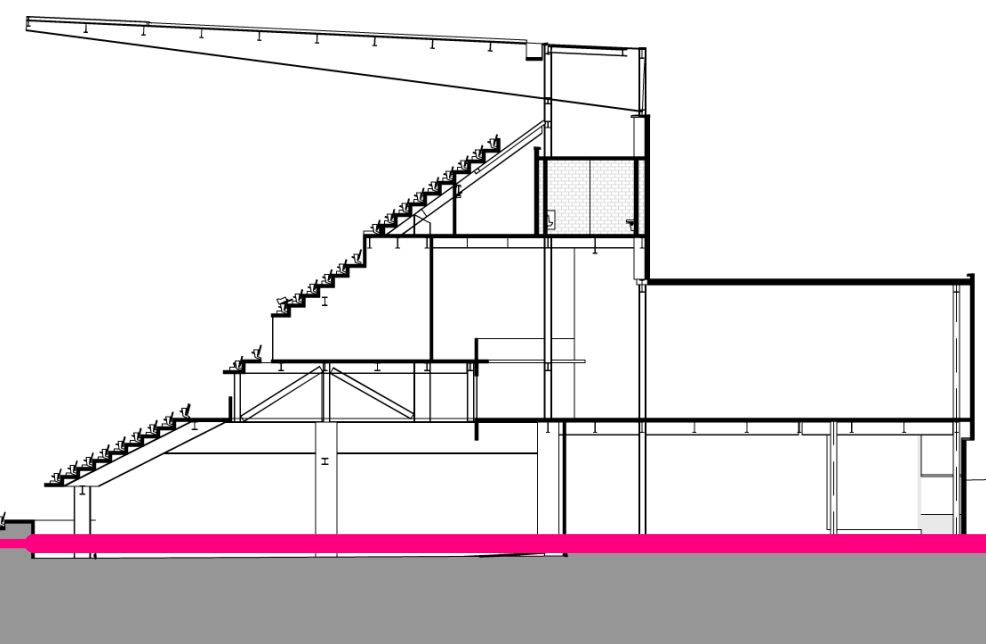
- Player Field Tunnel 1
Stadium MEP Space 2
Team Sport Facilities / Officials / Talent 3
Press / Media Facilities 4
Stadium Operations and Support 5
Fan Amenities - Restrooms 6
Fan Amenities - Concessions 7
Food Service and Food Service Support 8
Premium Space - Suites 9
Premium Space - Clubs 10
Retail - DC United Team Store 11
Retail - Leaseable Open Retail Space 12
Office Space - DC United 13
Office Space - Leaseable Open Office Space 14
Ticketing + Will Call 15
Circulation - Concourse 16
Circulation - Vertical 17
Circulation - Loading Dock + Truck Yard 18

ENTRY LEGEND

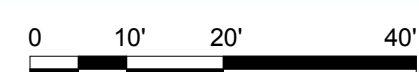
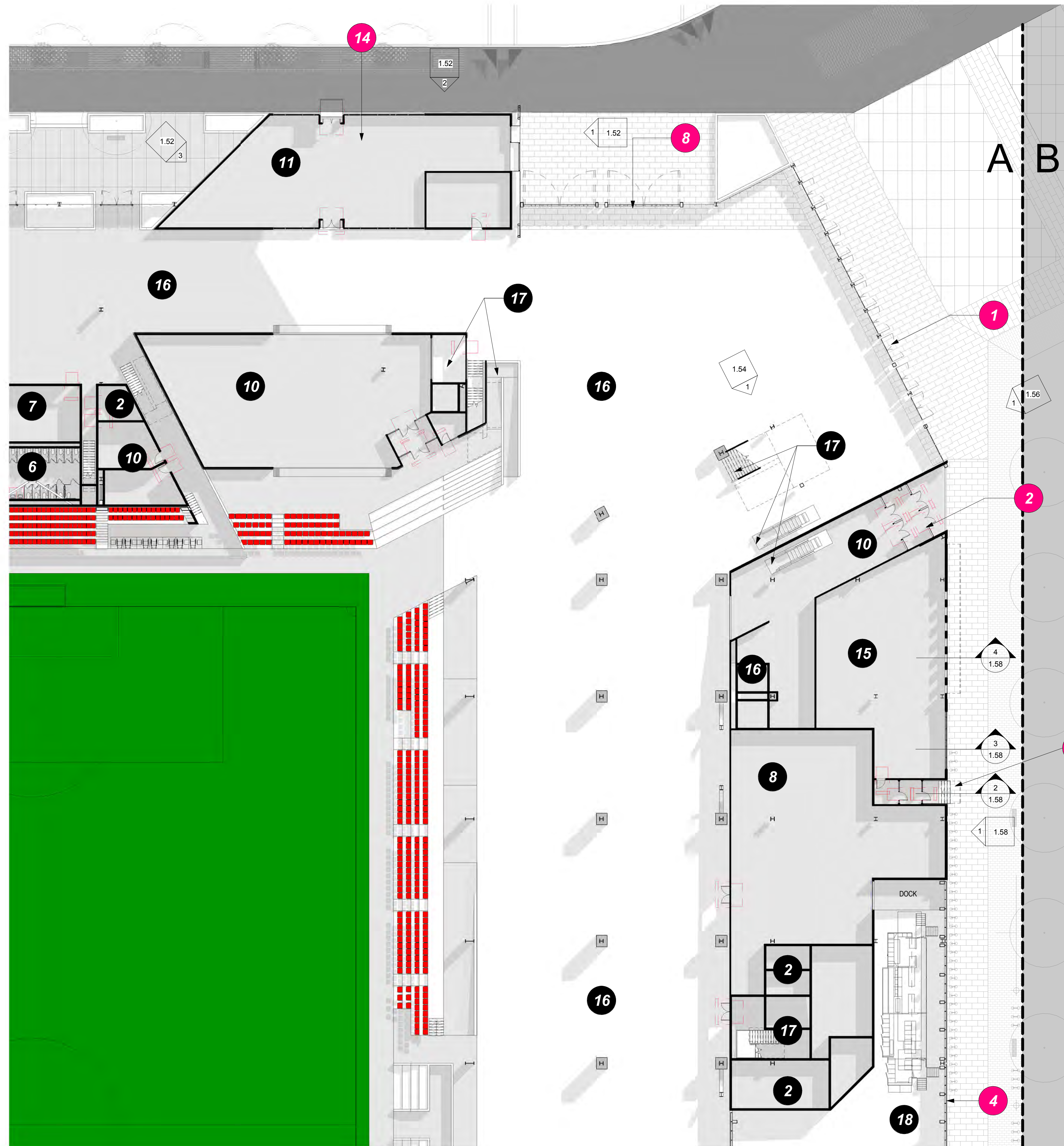
- Northeast Main Fan Entry Gate 1
Northeast Premium Entry 2
Ticketing + Food Service Staff Entry 3
Loading Dock Pedestrian Gate 4
Loading Dock Vehicular Gate 5
Stadium Operations Staff Entry 6
Utility Entry Gate 7
PEPCO 2' 24' Easement Entry Gates 8
Event Staff + Press + Officials Entry 9
DC United Staff + Player + Office Space Entry 10
Southwest Corner Retail Entry 11
Southwest Corner Fan Entry Gate 12
Northwest Corner Fan Entry Gate 13
Team Store Entry 14



WEST SECTION



EAST SECTION



1 FIELD LEVEL AREA PLAN - AREA A 1" = 20'-0"

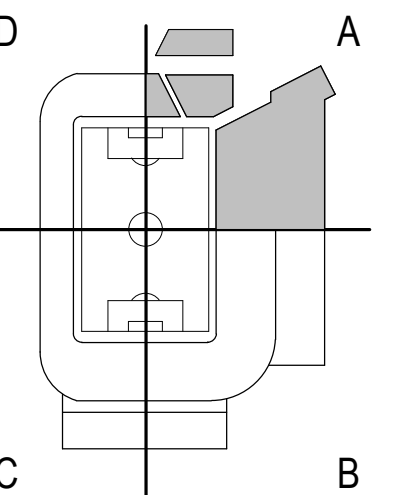
INTERIOR LAYOUTS ARE ILLUSTRATIVE ONLY AND SUBJECT TO CHANGE ON FINAL PLAN

POPULOUS Marshall Moya Design



DC UNITED SOCCER STADIUM 100 Potomac Avenue, SW Washington, DC 20024

100% PUD SUBMISSION



FIELD LEVEL AREA PLAN - AREA A



PART B - NOT PART OF STADIUM
PUD SUBMISSION, DESIGN INTENT
SHOWN FOR REFERENCE ONLY

PUBLIC REALM - NOT PART OF PUD
SUBMISSION, DESIGN INTENT SHOWN
FOR REFERENCE ONLY

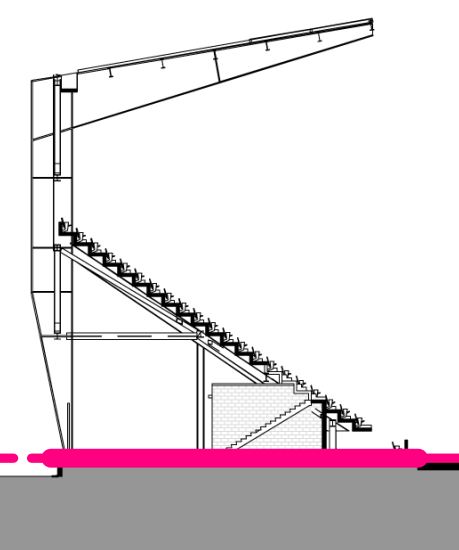
DISTRICT OF COLUMBIA RESPONSIBLE
FOR DESIGN OF PUBLIC REALM

SPACE LEGEND

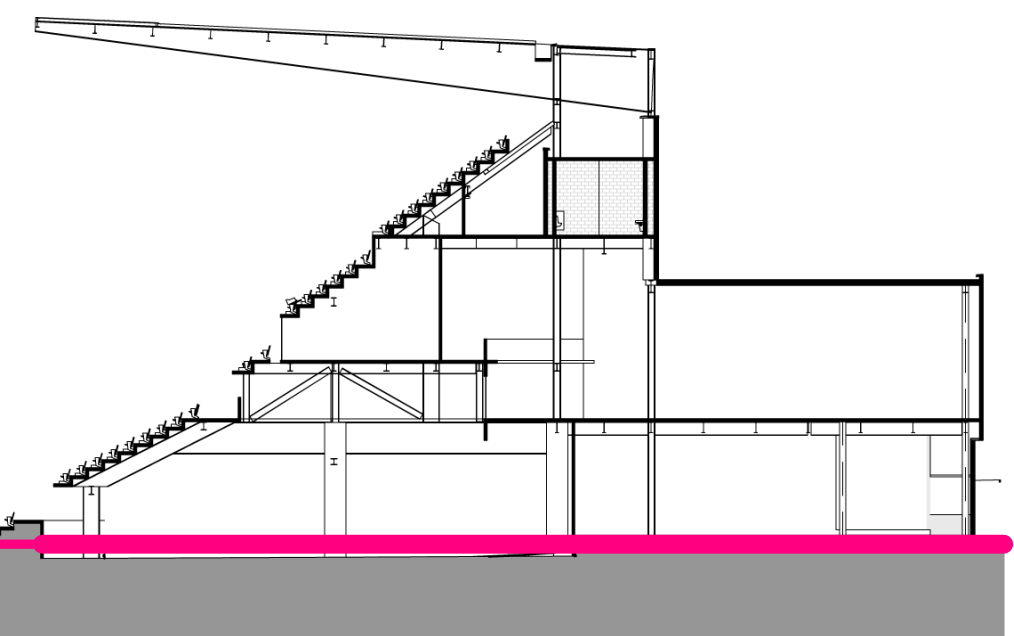
- 1 Player Field Tunnel
- 2 Stadium MEP Space
- 3 Team Sport Facilities / Officials / Talent
- 4 Press / Media Facilities
- 5 Stadium Operations and Support
- 6 Fan Amenities - Restrooms
- 7 Fan Amenities - Concessions
- 8 Food Service and Food Service Support
- 9 Premium Space - Suites
- 10 Premium Space - Clubs
- 11 Retail - DC United Team Store
- 12 Retail - Leaseable Open Retail Space
- 13 Office Space - DC United
- 14 Office Space - Leaseable Open Office Space
- 15 Ticketing + Will Call
- 16 Circulation - Concourse
- 17 Circulation - Vertical
- 18 Circulation - Loading Dock + Truck Yard

ENTRY LEGEND

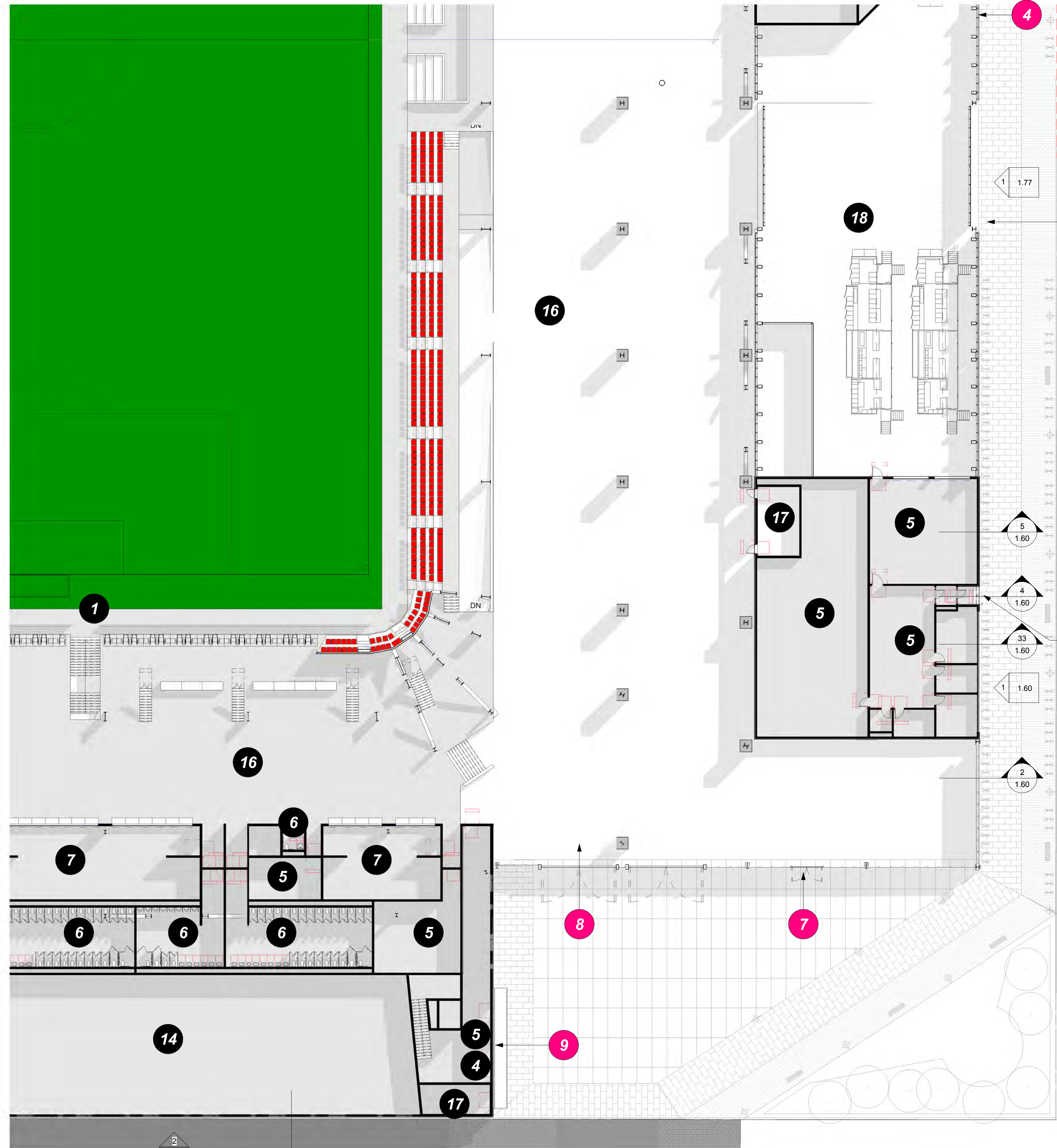
- 1 Northeast Main Fan Entry Gate
- 2 Northeast Premium Entry
- 3 Ticketing + Food Service Staff Entry
- 4 Loading Dock Pedestrian Gate
- 5 Loading Dock Vehicular Gate
- 6 Stadium Operations Staff Entry
- 7 Utility Entry Gate
- 8 PEPCO 2' 24' Easement Entry Gates
- 9 Event Staff + Press + Officials Entry
- 10 DC United Staff + Player + Office Space Entry
- 11 Southwest Corner Retail Entry
- 12 Southwest Corner Fan Entry Gate
- 13 Northwest Corner Fan Entry Gate
- 14 Team Store Entry



WEST SECTION



EAST SECTION



1 FIELD LEVEL AREA PLAN - AREA B
1" = 20'-0"

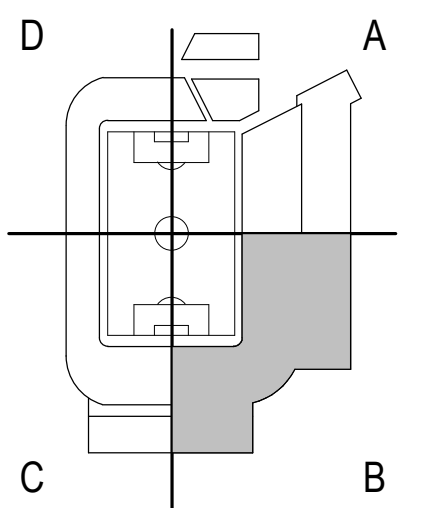
INTERIOR LAYOUTS ARE ILLUSTRATIVE ONLY AND SUBJECT TO CHANGE ON FINAL PLAN

POPULOUS
Marshall | Moya Design



DC UNITED SOCCER STADIUM
100 Potomac Avenue, SW
Washington, DC 20024

100% PUD SUBMISSION



FIELD LEVEL AREA PLAN - AREA B



PUBLIC REALM - NOT PART OF PUD SUBMISSION, DESIGN INTENT SHOWN FOR REFERENCE ONLY

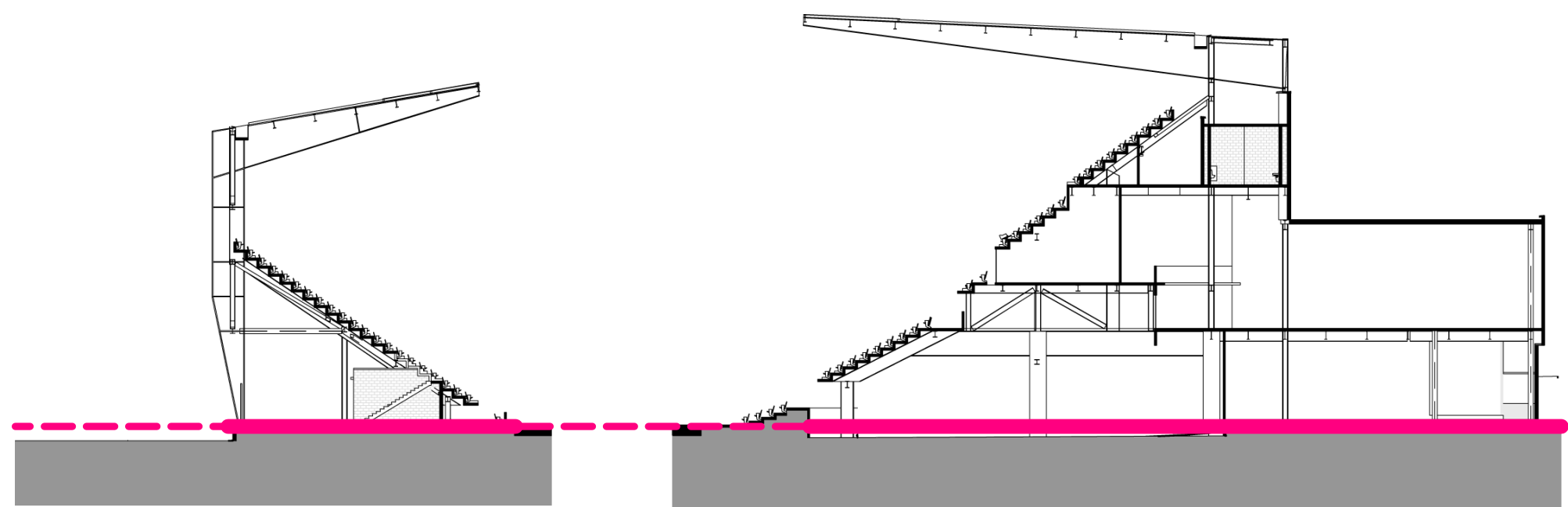
DISTRICT OF COLUMBIA RESPONSIBLE FOR DESIGN OF PUBLIC REALM

SPACE LEGEND

- Player Field Tunnel 1
- Stadium MEP Space 2
- Team Sport Facilities / Officials / Talent 3
- Press / Media Facilities 4
- Stadium Operations and Support 5
- Fan Amenities - Restrooms 6
- Fan Amenities - Concessions 7
- Food Service and Food Service Support 8
- Premium Space - Suites 9
- Premium Space - Clubs 10
- Retail - DC United Team Store 11
- Retail - Leaseable Open Retail Space 12
- Office Space - DC United 13
- Office Space - Leaseable Open Office Space 14
- Ticketing + Will Call 15
- Circulation - Concourse 16
- Circulation - Vertical 17
- Circulation - Loading Dock + Truck Yard 18

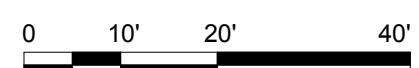
ENTRY LEGEND

- Northeast Main Fan Entry Gate 1
- Northeast Premium Entry 2
- Ticketing + Food Service Staff Entry 3
- Loading Dock Pedestrian Gate 4
- Loading Dock Vehicular Gate 5
- Stadium Operations Staff Entry 6
- Utility Entry Gate 7
- PEPCO 2 _ 24' Easement Entry Gates 8
- Event Staff + Press + Officials Entry 9
- DC United Staff + Player + Office Space Entry 10
- Southwest Corner Retail Entry 11
- Southwest Corner Fan Entry Gate 12
- Northwest Corner Fan Entry Gate 13
- Team Store Entry 14

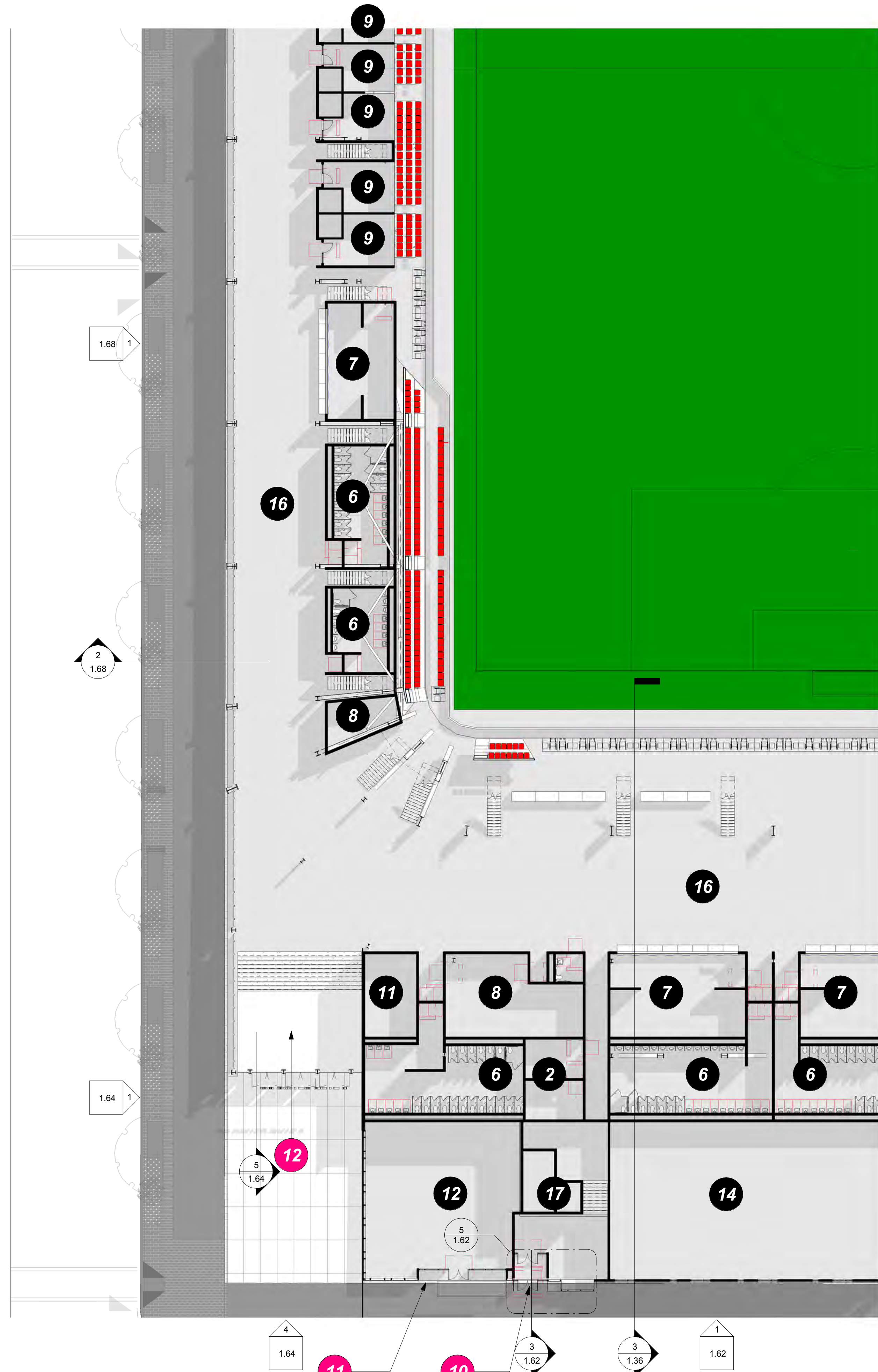


WEST SECTION

EAST SECTION



1 FIELD LEVEL AREA PLAN - AREA C
1" = 20'-0"



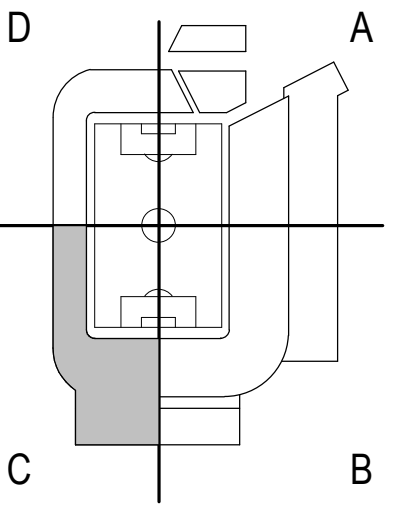
INTERIOR LAYOUTS ARE ILLUSTRATIVE ONLY AND SUBJECT TO CHANGE ON FINAL PLAN

POPULOUS
Marshall Moya Design



DC UNITED SOCCER STADIUM
100 Potomac Avenue, SW
Washington, DC 20024

100% PUD SUBMISSION



FIELD LEVEL AREA PLAN - AREA C



PUBLIC REALM - NOT PART OF PUD SUBMISSION, DESIGN INTENT SHOWN FOR REFERENCE ONLY

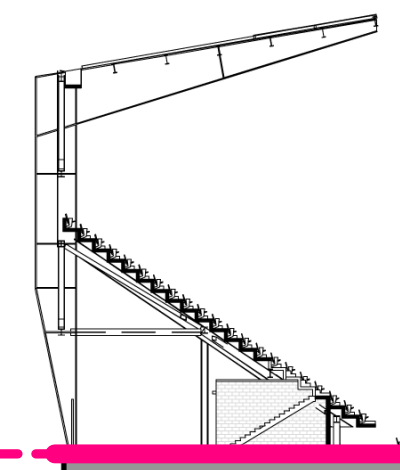
SPACE LEGEND

DISTRICT OF COLUMBIA RESPONSIBLE FOR DESIGN OF PUBLIC REALM

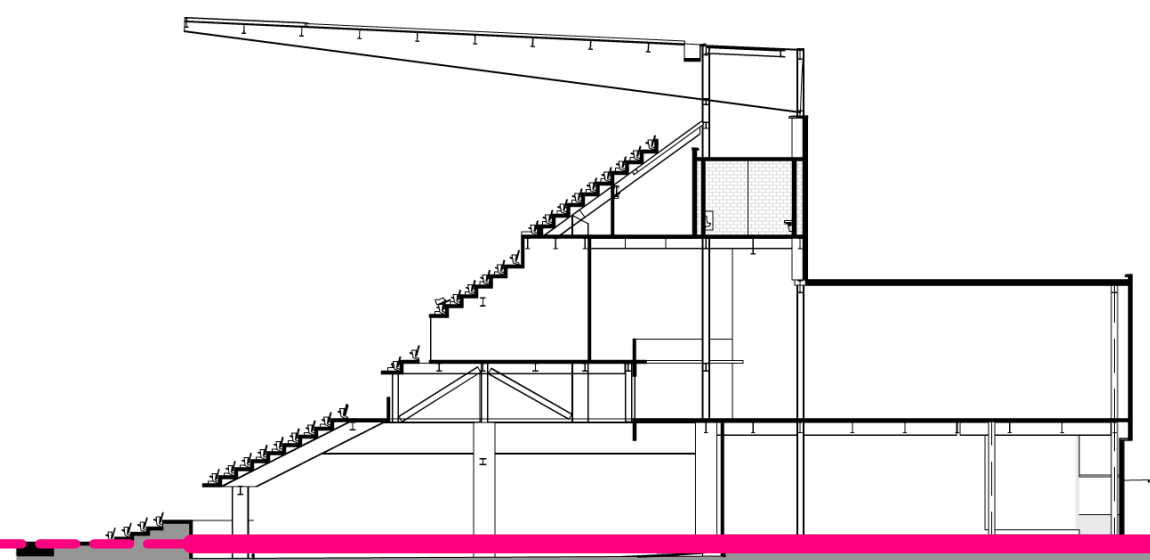
- 1 Player Field Tunnel
- 2 Stadium MEP Space
- 3 Team Sport Facilities / Officials / Talent
- 4 Press / Media Facilities
- 5 Stadium Operations and Support
- 6 Fan Amenities - Restrooms
- 7 Fan Amenities - Concessions
- 8 Food Service and Food Service Support
- 9 Premium Space - Suites
- 10 Premium Space - Clubs
- 11 Retail - DC United Team Store
- 12 Retail - Leaseable Open Retail Space
- 13 Office Space - DC United
- 14 Office Space - Leaseable Open Office Space
- 15 Ticketing + Will Call
- 16 Circulation - Concourse
- 17 Circulation - Vertical
- 18 Circulation - Loading Dock + Truck Yard

ENTRY LEGEND

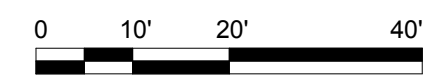
- 1 Northeast Main Fan Entry Gate
- 2 Northeast Premium Entry
- 3 Ticketing + Food Service Staff Entry
- 4 Loading Dock Pedestrian Gate
- 5 Loading Dock Vehicular Gate
- 6 Stadium Operations Staff Entry
- 7 Utility Entry Gate
- 8 PEPCO 2_24' Easement Entry Gates
- 9 Event Staff + Press + Officials Entry
- 10 DC United Staff + Player + Office Space Entry
- 11 Southwest Corner Retail Entry
- 12 Southwest Corner Fan Entry Gate
- 13 Northwest Corner Fan Entry Gate
- 14 Team Store Entry



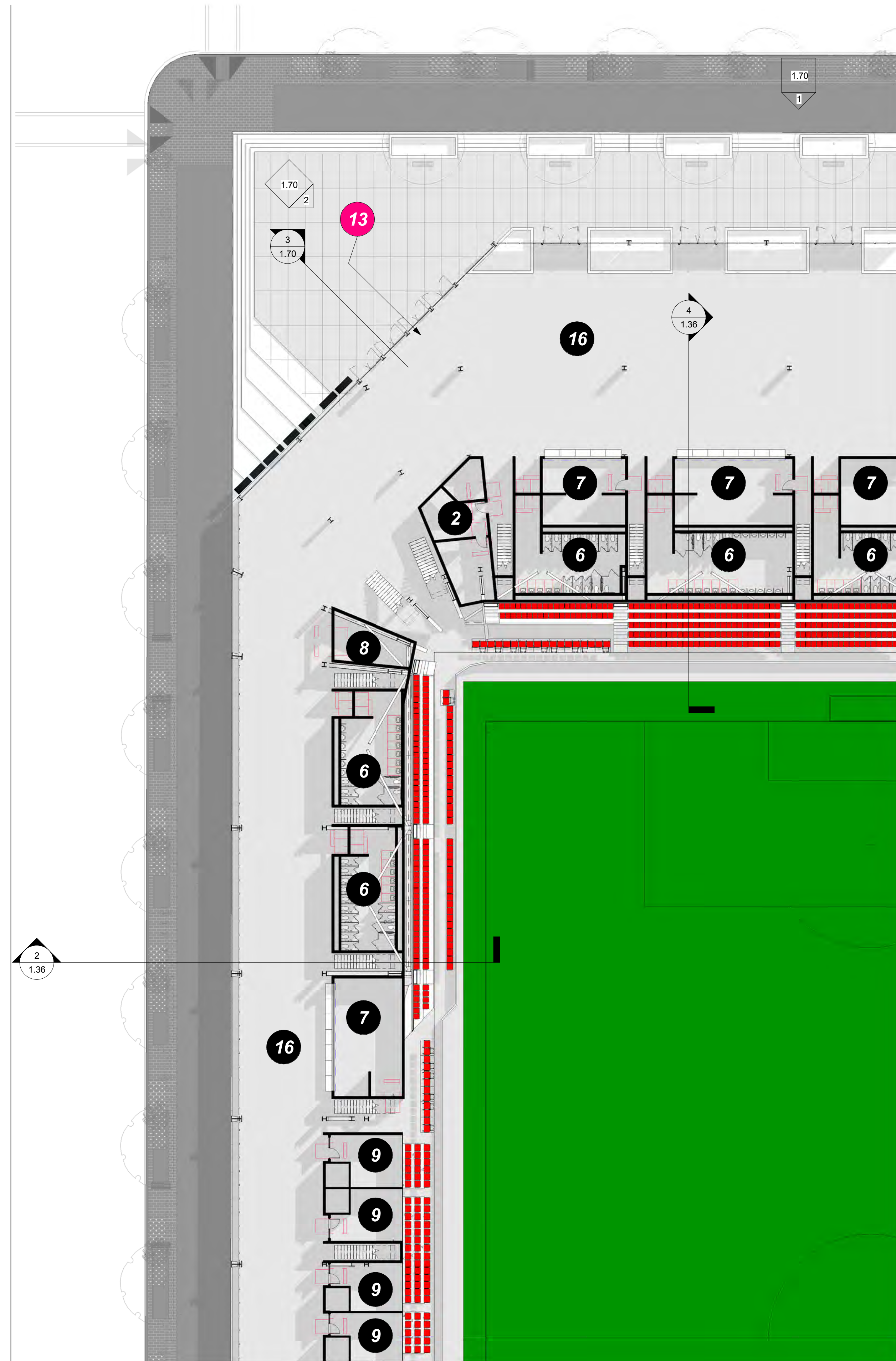
WEST SECTION



EAST SECTION



1 FIELD LEVEL AREA PLAN - AREA D
1" = 20'-0"



INTERIOR LAYOUTS ARE ILLUSTRATIVE ONLY AND SUBJECT TO CHANGE ON FINAL PLAN

POPULOUS

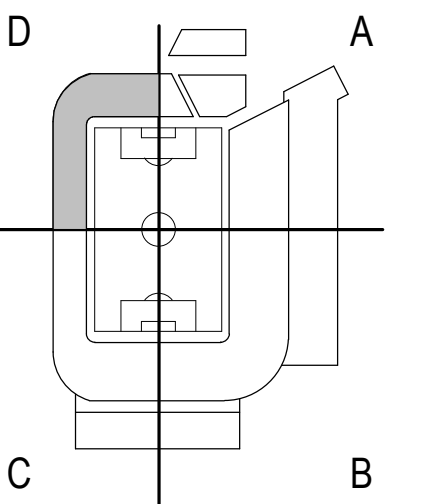
Marshall | Moya Design



DC UNITED SOCCER STADIUM

100 Potomac Avenue, SW
Washington, DC 20024

100% PUD SUBMISSION



FIELD LEVEL AREA PLAN - AREA D



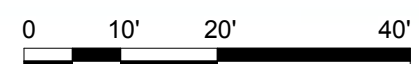
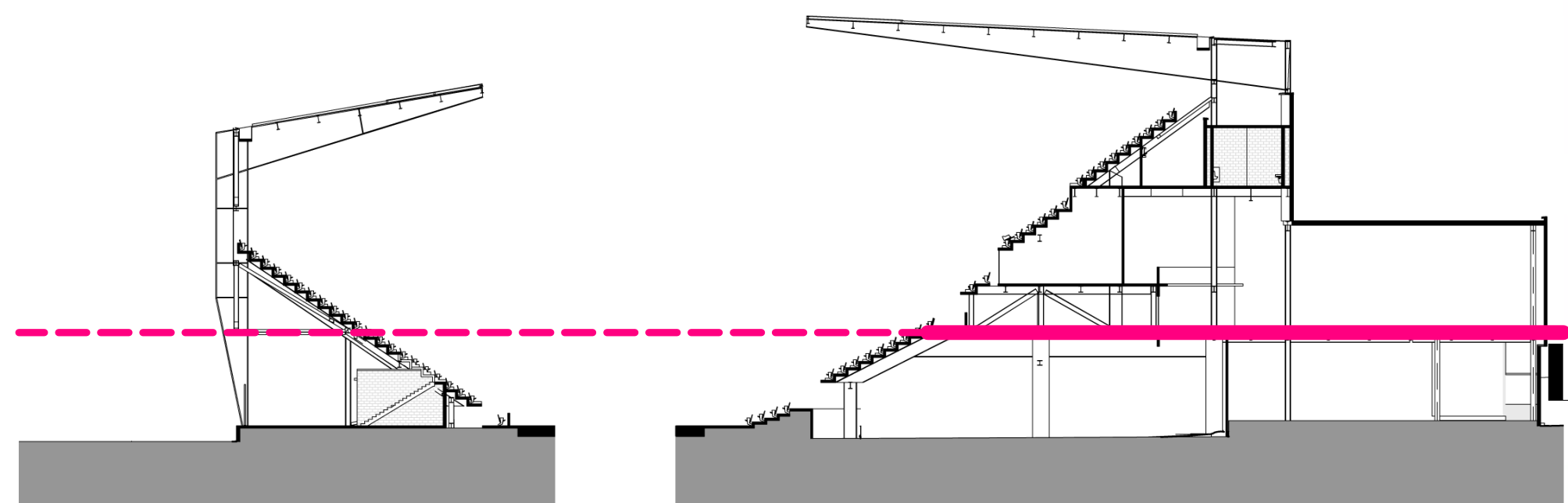
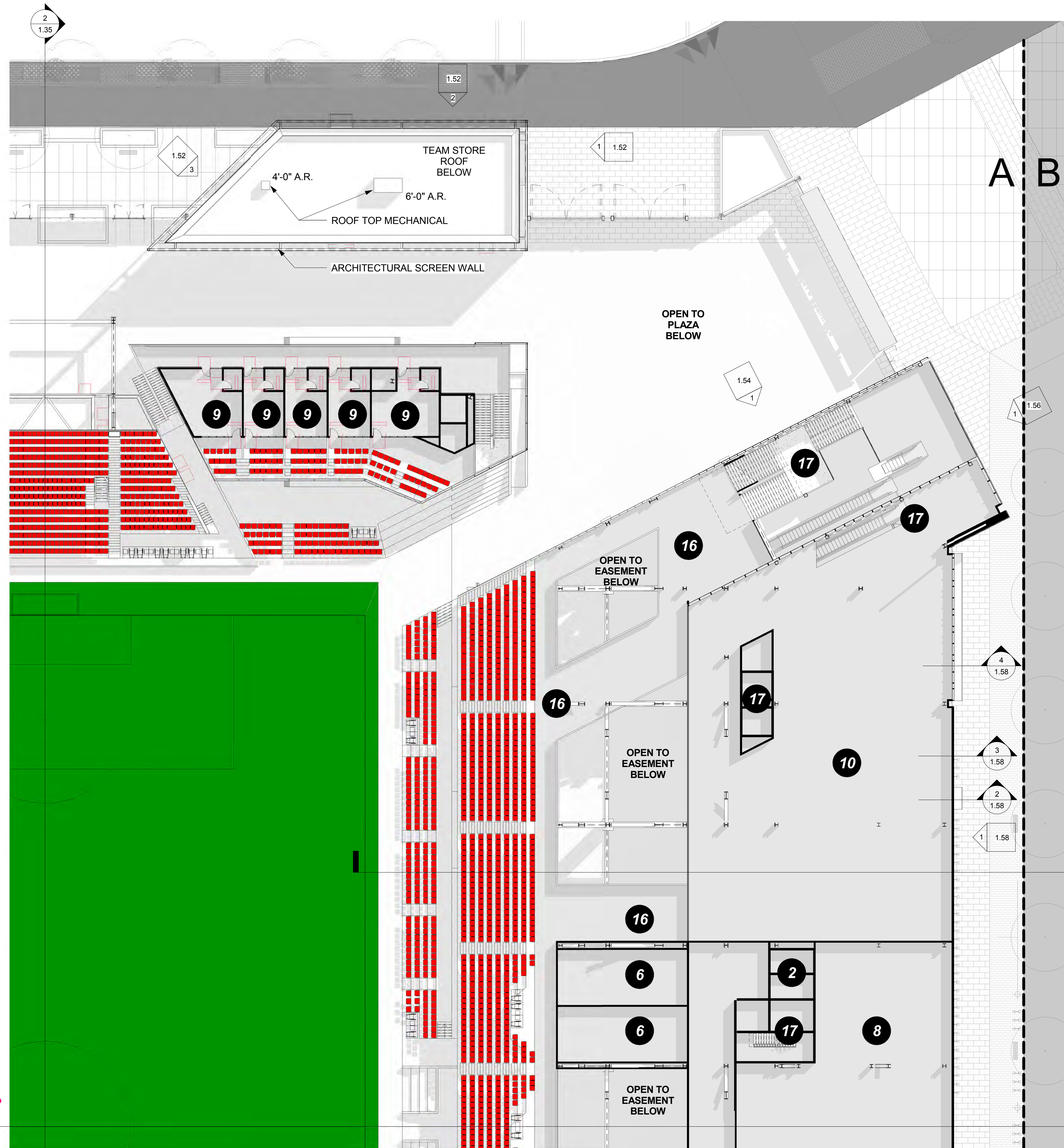
PART B - NOT PART OF STADIUM PUD SUBMISSION, DESIGN INTENT SHOWN FOR REFERENCE ONLY

PUBLIC REALM - NOT PART OF PUD SUBMISSION, DESIGN INTENT SHOWN FOR REFERENCE ONLY

DISTRICT OF COLUMBIA RESPONSIBLE FOR DESIGN OF PUBLIC REALM

SPACE LEGEND

- Player Field Tunnel 1
- Stadium MEP Space 2
- Team Sport Facilities / Officials / Talent 3
- Press / Media Facilities 4
- Stadium Operations and Support 5
- Fan Amenities - Restrooms 6
- Fan Amenities - Concessions 7
- Food Service and Food Service Support 8
- Premium Space - Suites 9
- Premium Space - Clubs 10
- Retail - DC United Team Store 11
- Retail - Leaseable Open Retail Space 12
- Office Space - DC United 13
- Office Space - Leaseable Open Office Space 14
- Ticketing + Will Call 15
- Circulation - Concourse 16
- Circulation - Vertical 17
- Circulation - Loading Dock + Truck Yard 18



1 CLUB LEVEL AREA PLAN - AREA A
1" = 20'-0"

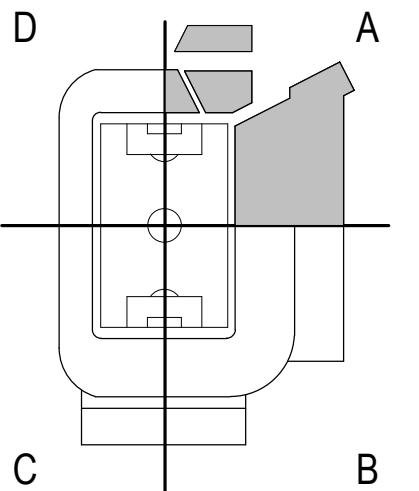
INTERIOR LAYOUTS ARE ILLUSTRATIVE ONLY AND SUBJECT TO CHANGE ON FINAL PLAN

POPULOUS
Marshall | Moya Design



DC UNITED SOCCER STADIUM
100 Potomac Avenue, SW
Washington, DC 20024

100% PUD SUBMISSION



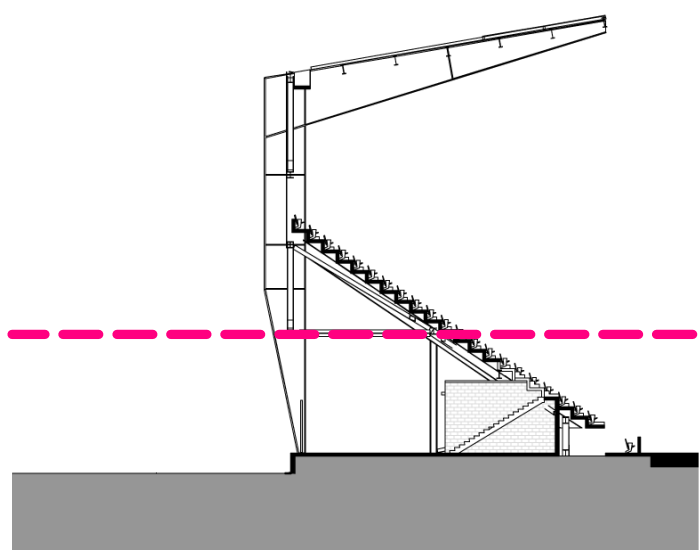
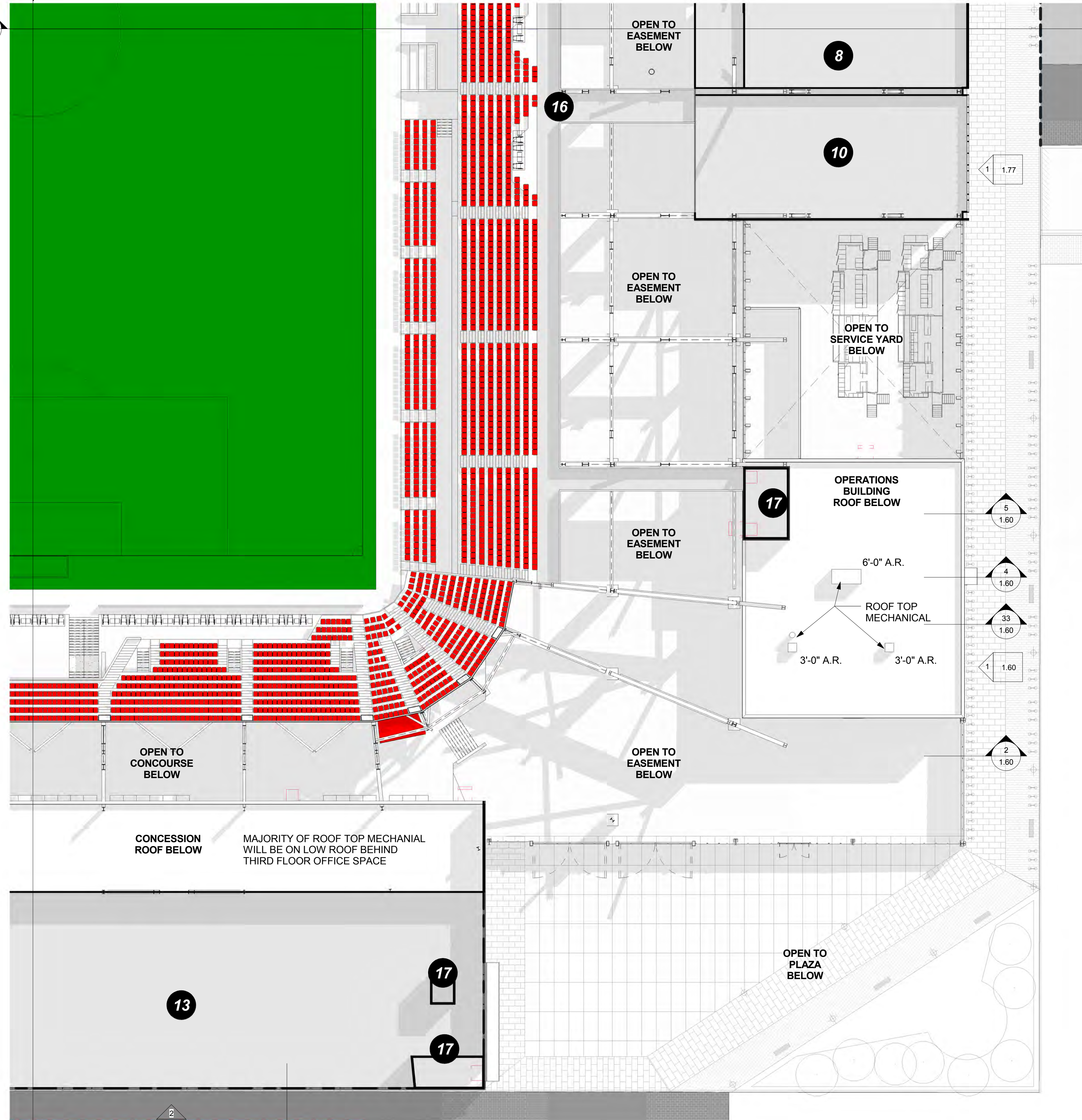
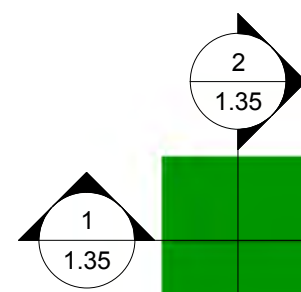
CLUB LEVEL AREA PLAN - AREA A

PUBLIC REALM - NOT PART OF PUD SUBMISSION, DESIGN INTENT SHOWN FOR REFERENCE ONLY

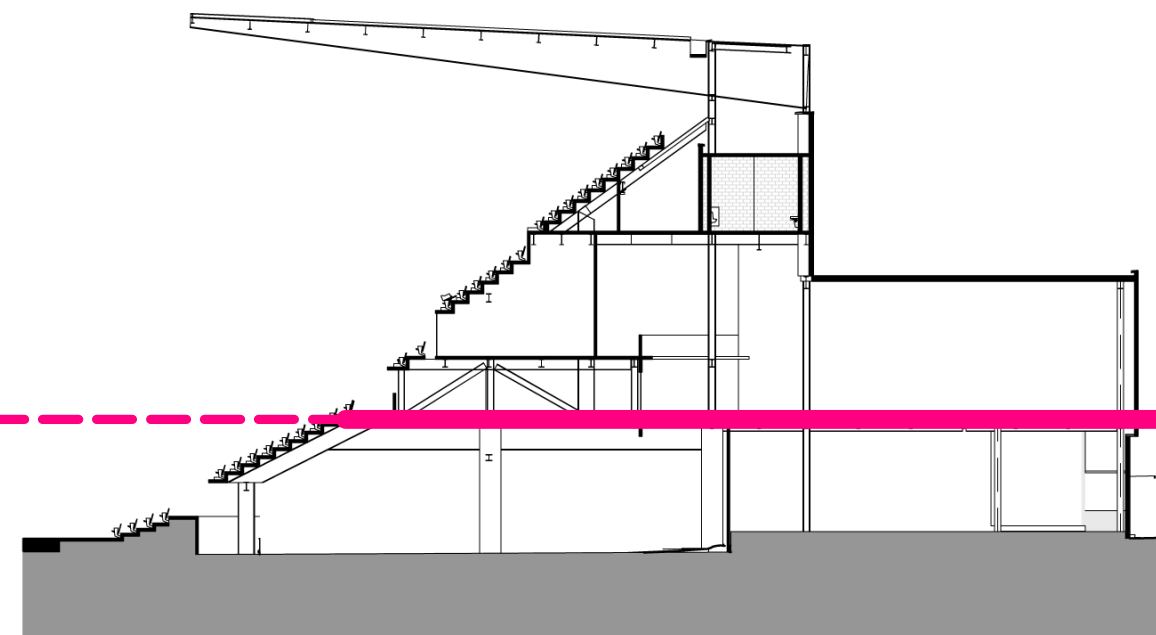
DISTRICT OF COLUMBIA RESPONSIBLE FOR DESIGN OF PUBLIC REALM

SPACE LEGEND

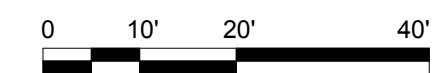
- 1 Player Field Tunnel
- 2 Stadium MEP Space
- 3 Team Sport Facilities / Officials / Talent
- 4 Press / Media Facilities
- 5 Stadium Operations and Support
- 6 Fan Amenities - Restrooms
- 7 Fan Amenities - Concessions
- 8 Food Service and Food Service Support
- 9 Premium Space - Suites
- 10 Premium Space - Clubs
- 11 Retail - DC United Team Store
- 12 Retail - Leaseable Open Retail Space
- 13 Office Space - DC United
- 14 Office Space - Leaseable Open Office Space
- 15 Ticketing + Will Call
- 16 Circulation - Concourse
- 17 Circulation - Vertical
- 18 Circulation - Loading Dock + Truck Yard



WEST SECTION



EAST SECTION



1 CLUB LEVEL AREA PLAN - AREA B
1" = 20'-0"

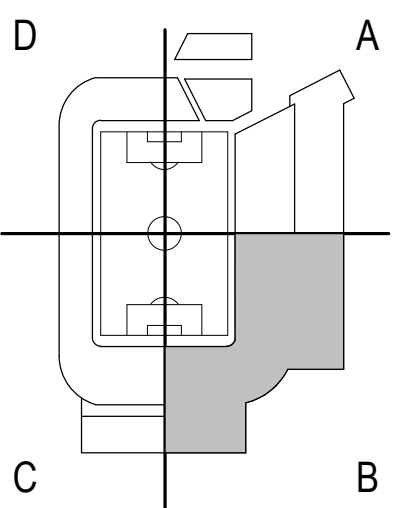
INTERIOR LAYOUTS ARE ILLUSTRATIVE ONLY AND SUBJECT TO CHANGE ON FINAL PLAN

POPULOUS
Marshall | Moya Design



DC UNITED SOCCER STADIUM
100 Potomac Avenue, SW
Washington, DC 20024

100% PUD SUBMISSION



CLUB LEVEL AREA PLAN - AREA B

1.40

